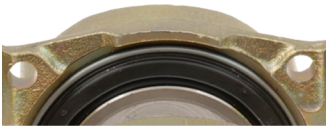
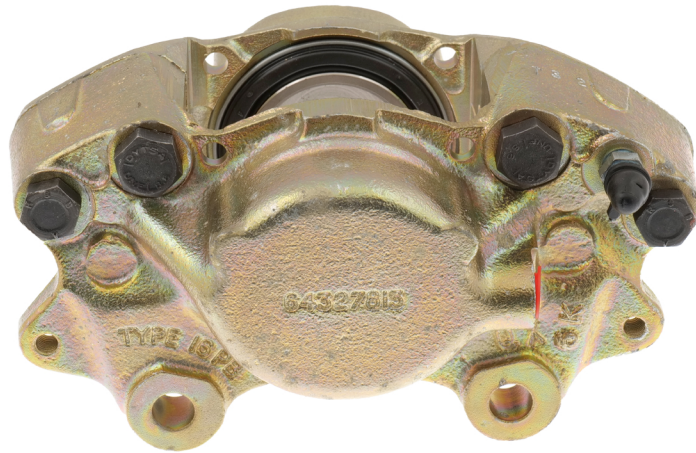
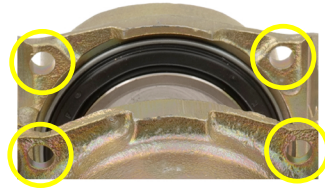


Type 16PB Brake Caliper Identification 310188 & 310189



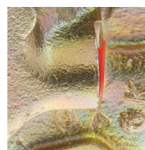
Solid Piston Seals
(with metal retaining clip)
Seal Kit: **519731**



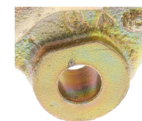
1/4" Brake Pad
Retaining Pins
Pads: **GBP132**
Fitting Kit: **GRPFK1**



Usually Cast with
"TYPE 16PB" Identification
Mark



Imperial Brake
Pipe Thread
Use Link Pipe: **309723**



Imperial Mounting Bolt Hole Size
0.438" / 11mm
Bolt: **113142**
Locking Washer: **WL600071**

QUALITY PARTS AND ACCESSORIES

